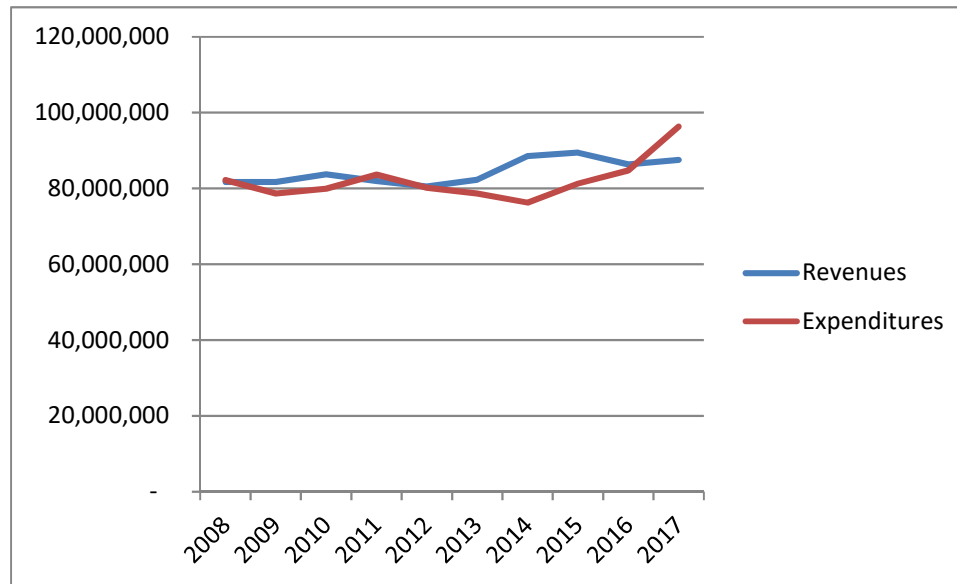


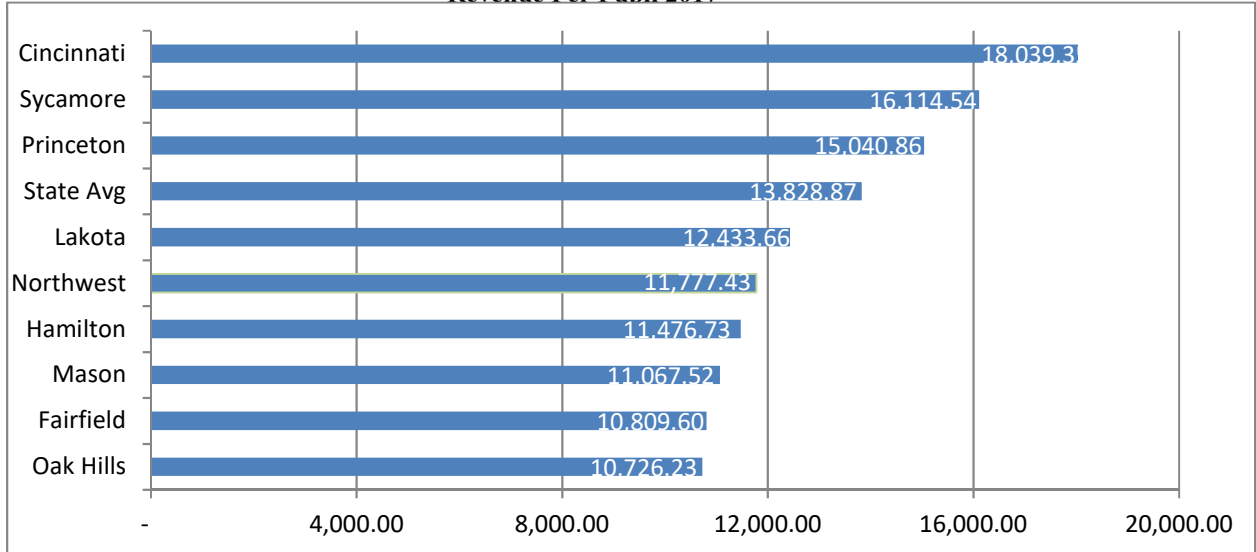
## Financial Facts

- **Annual Spending:** Northwest's annual spending in 2017 was \$96.3 million. That's \$14 million (17%) more than the school district spent in 2008, due to spending \$10 million for the Master Facilities Project. Revenue peaked with the collection of two emergency levies. One of which has since been converted to debt proceeds for the Master Facilities Project. Northwest operates on a balanced budget. Reductions are made each year to stay within operating revenues.



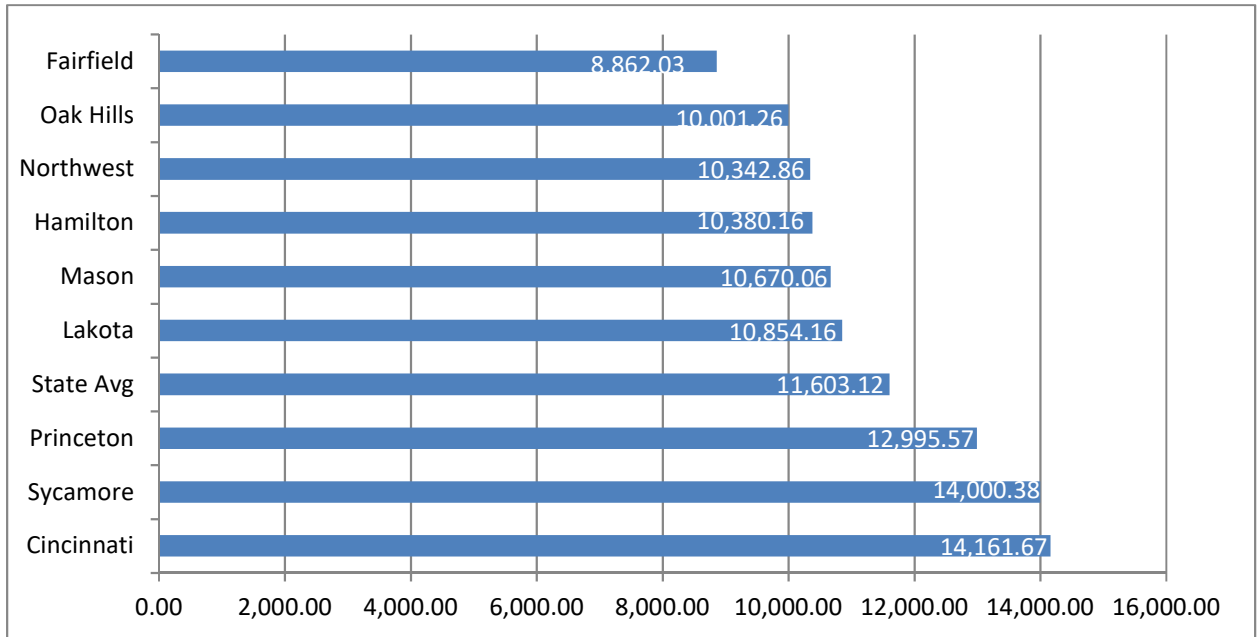
- **Revenue Sources:** Northwest currently receives 40% of its revenue from the State and 60% from local sources.
- **Revenue per Pupil:** Northwest receives \$2,051 less per pupil than the state average. (Source: Ohio Department of Education, FY 2017) Northwest will continue to receive less per pupil as the 2010 Emergency Levy was not renewed.

**Revenue Per Pupil 2017**



- **Spending Allocation:** Northwest spending is allocated as follows:
  - Instruction (61%) - Activities involving teacher and student interaction, including co-curricular activities. Includes teachers, aides or assistants engaged in instruction.
  - Building Operations (19%) - Includes building services (utilities and insurance), care and upkeep of grounds and equipment, transportation, security, fiscal services and food services.
  - Administration (13%) – Includes executive and building administration services.
  - Pupil Support (4%) – Includes attendance, social work, student accounting, counseling, student appraisal, information, record maintenance, and placement services. Also includes medical, dental, nursing, psychological and speech services.
  - Staff Support (3%) – Includes instruction improvement, curriculum development, instructional staff training, academic assessment, and media, library and instruction-related technology services.
- **Spending per Pupil:** Northwest spends \$1,260 less per pupil than the state average and \$620 less than the average of similar districts. (Source: Ohio Department of Education, FY 2017)

### Expenditure Per Pupil 2017



- **Bond Rating:** Northwest's bond rating is Aa2 by Moody's Investor Services, Inc.
- **Reporting Award:** Northwest has received the Certificate of Excellence in Financial Reporting from the Association of School Business Officials International (ASBO) and the Government Finance Officers Association (GFOA) every year since 1992.
- **Board Policy:** Northwest's [board policy 6220.01](#) sets a financial philosophy to maintain a general fund cash balance equivalent to at least three months of operating expenditures.
- Northwest has 169 students for each administrator, compared to the average of similar districts 171.
- Northwest has seven years of expenditure data out on the State of Ohio Treasurer's Office [Online Checkbook](#).