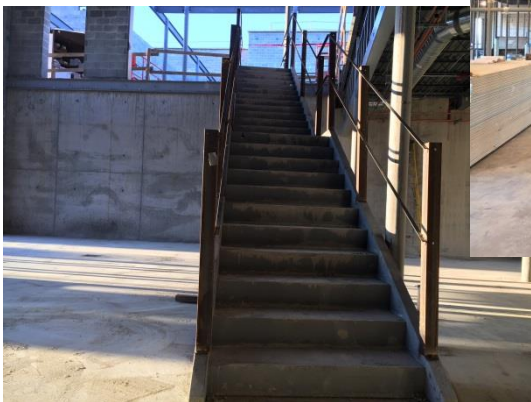
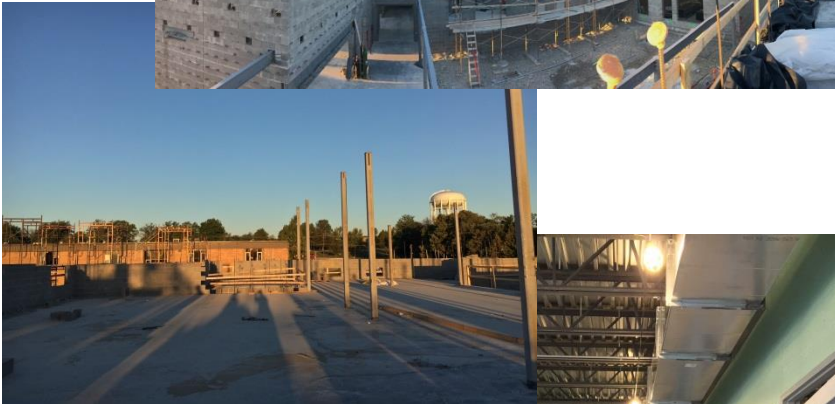


Weekly Blitz

September 29, 2017



Pleasant Run Elementary



Steel has been set in the Administration area.

Drywall framing on the second level is complete.

Stairs in the media center have been poured and concrete block walls are up to 4ft tall on the Upper Level of the classroom wing.

Taylor Elementary



Air handlers have been set in the upper level mechanical room. North and east walls in the mechanical room are at roof level.

DOAS units were set in the mechanical mezzanine.

East wall of classroom wing is at roof level.

Steel joists and roof deck are complete at the gym.

Struble Elementary



Steel and decking have been set in the gym.

DOAS units were placed on the mechanical mezzanine.

View of the Media Center courtyard and east elevation of the classroom wing.